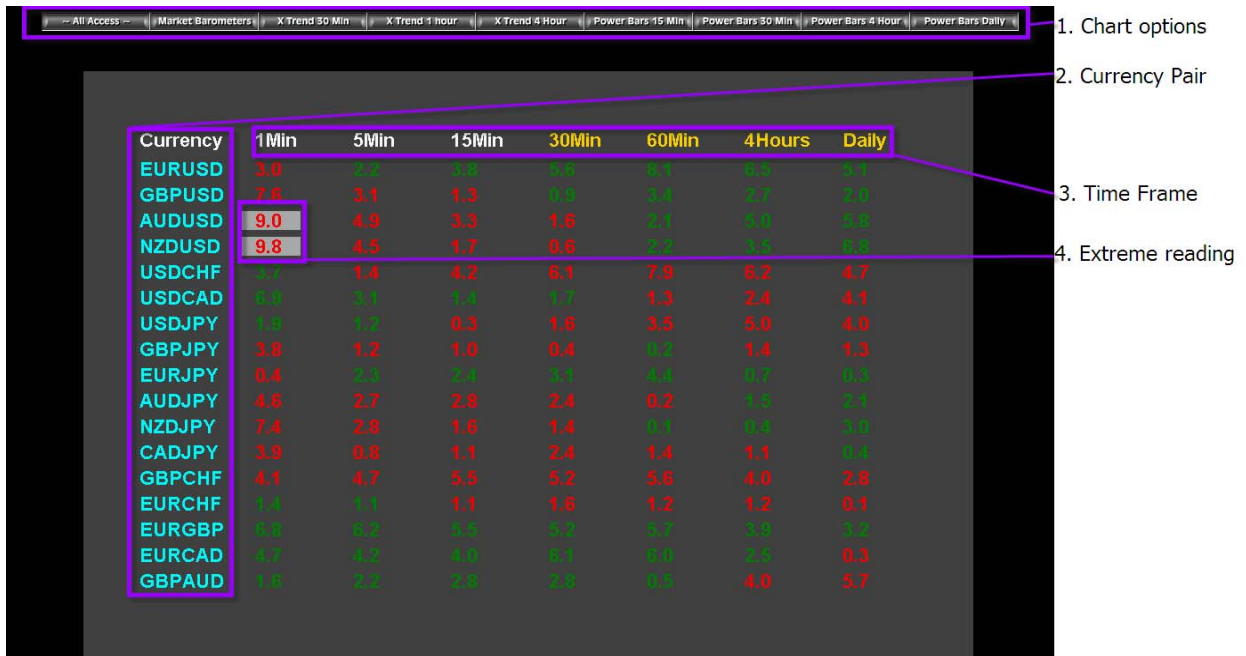


4Xlounge X Meter

Help Doc & Symbol Key



1. Chart Options- Select from a number of different chart options including the Market Barometer, X Trend, and Power Bars. The X Meter (shown above) can be found under the Market Barometer tab. The All Access tab allows the user to choose from additional options including the 4Xlounge All Access page, forum, sending a support ticket, and the FAQ movie database.

2. Currency Pair – View the X Meter indications among 17 different currency pairs. This also allows us to look for correlations between similar currency pairs such as the EURJPY & GBPJPY or the AUDUSD and AUDJPY.

3. Time Frame – The X Meter is available on multiple time frames from a 1-Min to Daily time frame. Short term (day traders) will typically use a 1 and 5 min time frame, as they tend to occur more frequently within a trading day.

4. Extreme Reading – The X Meter is designed to act as a 'speedometer' of the forex market, spotting possible reversal points once a currency pair has moved in a particular direction at a very

fast rate. The X Meter will highlight indications of 9 and above, however 'extreme' indications are considered to emerge around 15 or greater. Green numbers indicate movement to the upside; red numbers indicate movement to the downside.